

MADAGASCAR 3

MARTY

3D PAPER TOY

GETTING STARTED

1



CUT

2



SCORE

3



GLUE

- Cut out all your pieces first on solid lines using scissors or a craft knife.
DON'T FORGET TO CUT THE FUSE OUT ON THE CANON BACK!

- Fold all pieces upward or downward along score lines.



MOUNTAIN FOLD



VALLEY FOLD

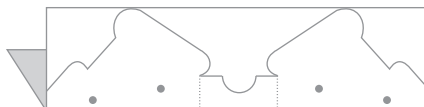
INSTRUCTIONS

CART

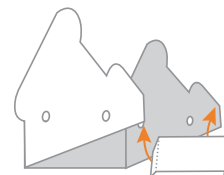
- 1 Starting on the wide end, roll up axles as tight as you can. Glue and set aside to dry.



- 2 Fold cart in half and glue together. Cut out along grey line. Punch out holes in cart and in wheels.



- 3 Glue tabs of back board onto cart. Align to the bottom edges.



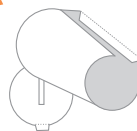
CART CONT.

- 4 Slide axles through holes on cart. Slide cart wheels onto axles. Glue hub caps to end of axles. Hold until dry.

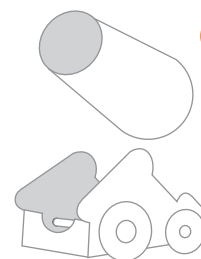


CANNON

- 1 Glue tab A to opposite edge.



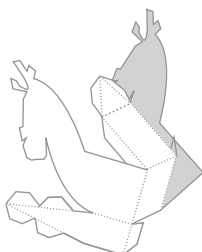
- 2 Fold up fuse. Glue tab B to inside of cannon.



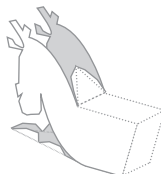
- 3 Angle cannon up and glue to side edges of cart. Set aside to dry.

MARTY

- 1 Glue tabs A, B, C and D on Marty in order.



- 2 Glue tabs E. Glue tabs F. Glue head together.



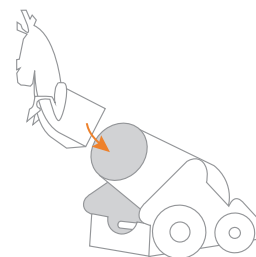
- 3 Glue on arms.



- 4 Squeeze the cannon gently and slide Marty inside.

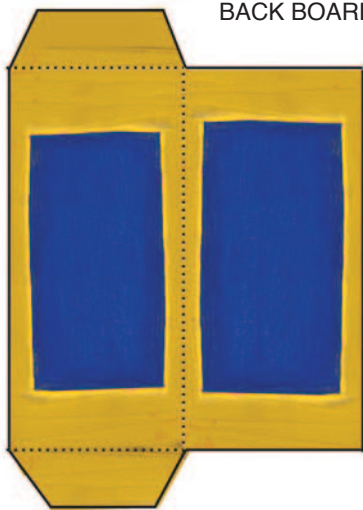


You're ready to roll!

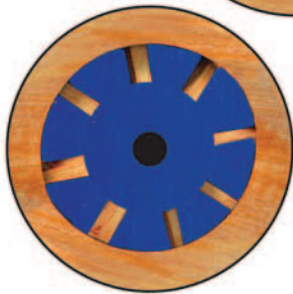
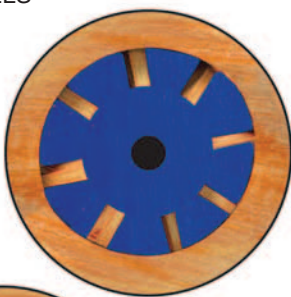




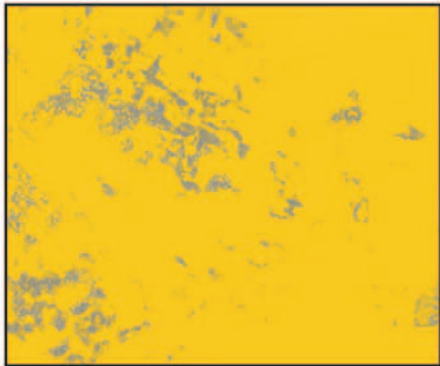
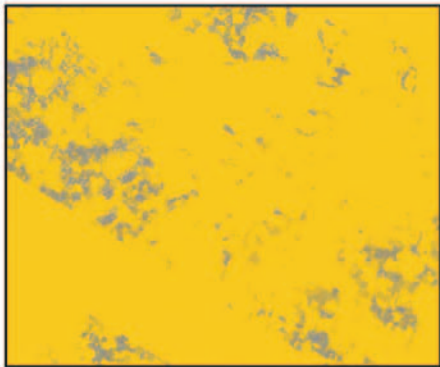
BACK BOARD



BIG WHEELS



AXLES



CART

